

Your part in the RSPO supply chain: A guide for distributors and wholesalers

Who are distributors and wholesalers?

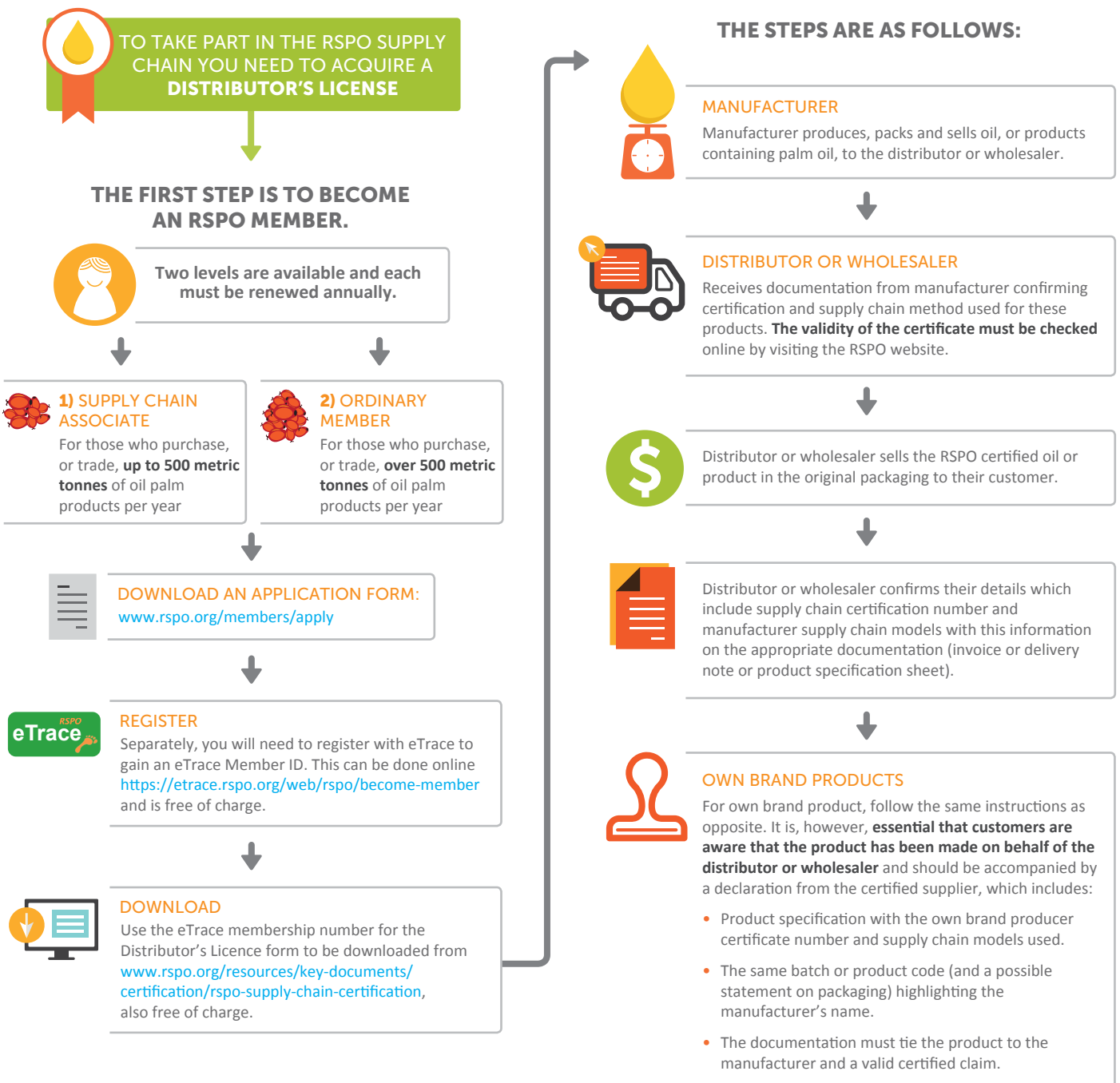
For the purposes of RSPO supply chain certification, distributors and wholesalers take legal ownership, store and sell products to their customer bases, but do not unpack, repack or relabel those products at any stage.

They have a vital role to play in maintaining the integrity of the RSPO certified supply chain. They link participants in the supply chain together and ensure that RSPO certified products are kept separate and are never mixed with mainstream, non-certified material.

Their customers include food and non-food manufacturers, smaller high street retailers and foodservice outlets.

Getting Started

THE STEPS ARE AS FOLLOWS:



Communication with your customers



In order for the supply chain to be unbroken, your customers need the RSPO certification number of the goods' manufacturer and applicable supply chain model used, as per the **Supply Chain Certification Standard 5.1.2**.



This can be found on the **invoice/delivery note/product specification sheet (Supply Chain Standard chapter 5.6)**. Where multiple products are involved, we recommend that you use product specification sheets only.



WORDING EXAMPLE

Supplied under RSPO supply chain model IP, SG or MB (delete as applicable)
RSPO supply chain certificate number: **XXXXX**



As an RSPO member you may like to promote your membership further.


Download the RSPO Rules on Market Communications and Claims at: www.rspo.org/resources/supplementary-materials/communications



e-Trace RSPO

www.etrace.rspo.org

RSPO Rules on Communication and Claims:
www.rspo.org/resources/supplementary-materials/communications

Have a question? 

<https://askrspo.custhelp.com/app/answers/list>

CONTACT US

For membership related questions:
membership@rspo.org

For supply chain certification related questions:
certification@rspo.org

For trademark related questions:
trademark@rspo.org

www.rspo.org